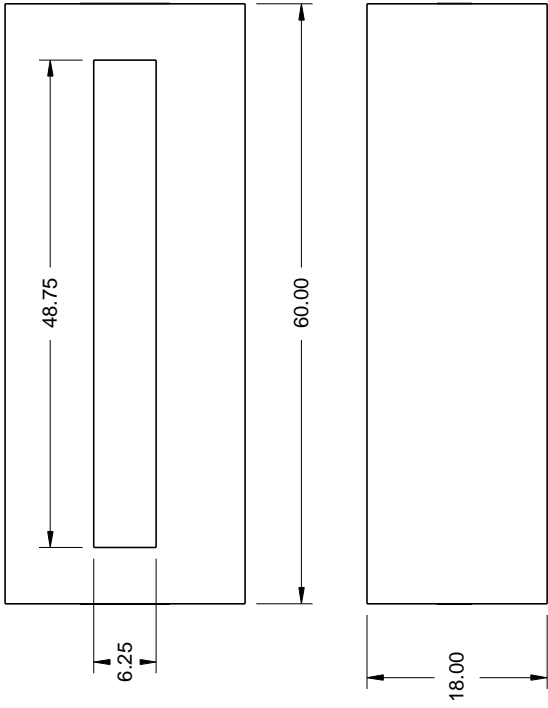
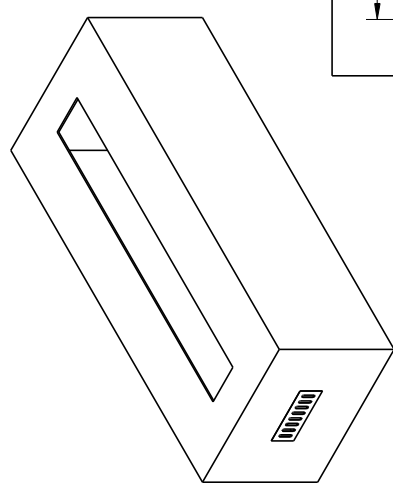


REVISIONS				
ZONE	REV	DESCRIPTION	DATE	APPROVED



**Material:**  
 22G Galvanized Steel Structure  
 1/2" Hardiboard shell

**Additional info:**  
 Weighs 150 lbs.  
 304 Stainless steel vents  
 Open bottom

Do not pre-cut surface material. Only cut surface material after enclosure is on-site. HPC is not responsible for surface material that cracks or fails due to heat.	DRAWN	DATE	FPE60X24-TRGH/48	
	Mike Chaffins	2/5/2015	Hearth Products Controls Co	
CHECKED	QA	FSCM NO.	DWG NO.	REV
MFG	APPROVED	SIZE	SCALE	SHEET
		A		



**Hearth Products Controls Co**