

JADE SERIES

Direct Vent Gas Fireplaces





Jade Series Direct Vent Gas Fireplaces

The Jade fireplace helps you unwind and rebalance with a ribbon of continuous flame and a soothing style. With its great looks, many features, easy operation and the reliability of Majestic, life is better. Sit back, relax and enjoy your home with the Jade fireplace from Majestic.

Quick Look

- Stunning continuous flame in a popular linear design
- Customize the interior with fade-resistant reflective black glass interior panels, driftwood logs, natural stones, glass firebed colors and LED accent lighting
- Add a SmartWall™ kit and mount your TV 12" above your fireplace, no mantel required¹
- Enjoy your fireplace any season by using heat distribution kits to direct heat where you want it, inside or outside your home
- Available in 32" or 42" models

Customize your fireplace

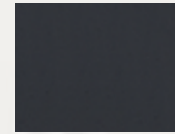
Select your front and finish



Clean Face Trim
Available in Black,
Bronze and Pewter



Picture Frame Front
Available in Charcoal
and Pewter



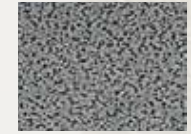
Black



Bronze



Charcoal



Pewter



Clean face front in pewter, fade-resistant black glass interior panels, natural stones, LED accent lighting



Picture frame front in pewter, fade-resistant black glass interior panels, driftwood logs, sapphire glass, LED accent lighting

Select your interior options



Bronze Glass
(comes standard)



Diamond Glass



Sapphire Glass



Onyx Glass



Driftwood Logs



Natural Stone Kit



LED Accent Lighting



Fade-Resistant Reflective
Black Glass Interior Panels

Control your comfort



IntelliFire™ Touch Touchscreen Remote Control

Features on/off, flame height adjustment, lights adjustment, thermostat mode, room temperature readout, child lock, timer mode, battery backup, cold climate mode, power vent, and wall docking station.



IntelliFire Touch Wireless Wall Switch

Features battery strength indicator, battery backup and on/off.

Cover: Jade 42 with picture frame front in pewter, bronze glass media, LED accent lighting and fade-resistant reflective black glass interior panels
Above: Jade 32 with clean face front in black, bronze glass media, natural stones, LED accent lighting and fade-resistant reflective black glass interior panels

Heat Management Solutions

Technologies to help you manage the heat throughout your house.

SmartWall™ TV Kit Design flexibility with automatic fan that allows a TV to be mounted 12" above the fireplace without a mantel or shelf.¹

Heat-Zone® Kit Reduce wall temperatures and redirect up to 50% of the heat from your fireplace to another room in your home.

Heat Duct Kit Send the warmth from your fireplace to the rest of your home via the furnace ductwork.

Heat Out Kit Redirect up to 40% of the heat from your fireplace and direct it outside for comfort year round.

Optional Fan Move heat directly into the room for added comfort.

Technology

IntelliFire Touch ignition system The most advanced and intuitive IntelliFire system, making operating your fireplace simple, smart and safe. Select the wireless wall switch or touchscreen remote for the solution that fits your life.

Direct Vent technology

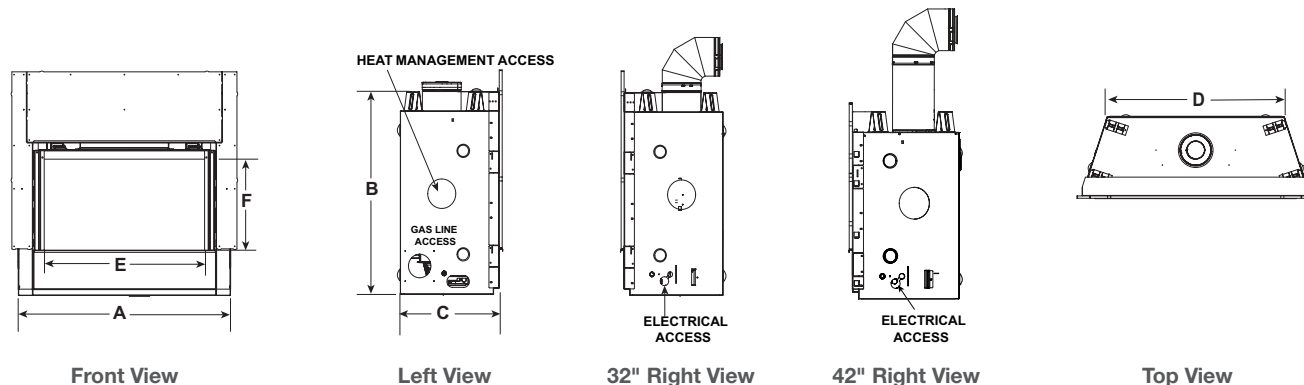
Direct Vent fireplaces remove 100% of combustion exhaust and odors from your space. These sealed fireplaces provide optimal heat, conserve energy and ensure clean indoor air quality.

¹ The SmartWall fan will and must run continuously to move the heat away from the area above the fireplace. Also minimum guidelines must be followed:

- Minimum of 3" gap between the TV and wall at all angles
- Minimum of 24" to side wall
- Ambient room temperature 75° F or less
- See TV manufacturer's recommendation for TV operating temperatures
- Minimum 60" from the top of the fireplace opening to the ceiling

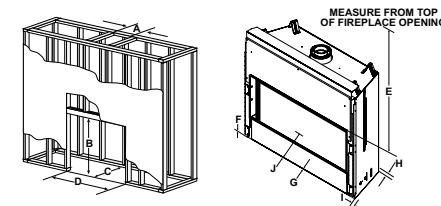
Technical Specifications

MODEL	FRONT WIDTH (A)		HEIGHT (B)		DEPTH (C)		REAR WIDTH (D)		GLASS SIZE (E X F)	BTU/HR INPUT
	ACTUAL	FRAMING	ACTUAL	FRAMING	ACTUAL	FRAMING	ACTUAL	FRAMING		
Jade 32"	36" (914)	37" (940)	38-1/16" (967)	36-1/2" (927)	17-3/4" (451)	17-3/4" (451)	25-3/4" (654)	37" (940)	27-1/4" x 15-1/4" (692 x 337)	19,000 (NG) 16,500 (LP)
Jade 42"	48" (1219)	49" (1245)	33-11/16" (856)	32-3/4" (832)	17-3/4" (451)	17-3/4" (451)	37-3/4" (959)	49" (1016)	39" x 15-1/4" (991 x 337)	25,250 (NG) 23,500 (LP)



Framing Dimensions

MODEL	A	B	C	D	E	F	G	H	I	J
Jade 32"	8-5/8" (219)	36-1/2" (927)	17-3/4" (451)	37" (940)	31" (787)	0" (0)	0" (0)	1/2" (13)	1/2" (13)	36" (914)
Jade 42"	8-5/8" (219)	32-3/4" (832)	17-3/4" (451)	49" (1245)	31" (787)	0" (0)	0" (0)	1/2" (13)	1/2" (13)	36" (914)



Dimensions are in inches and millimeters. Product information is not complete and is subject to change without notice. Product installation must adhere strictly to instructions shipped with product. We recommend measuring individual units at installation. NOTE: Combustible material should not cover the face. Refer to installation manual for detailed specifications on installing this product. Hearth & Home Technologies® reserves the right to update units periodically. Actual product appearance, including flame, may differ from product images.

Efficiencies EnerGuide (CSA P.4.1-15) is the official Government of Canada mark associated with the labelling and rating of the energy consumption or energy efficiency of specific products.

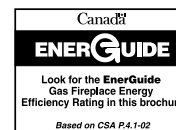
JADE32	JADE42
51.1%	63.8%



For more information about Majestic efficient and environmentally friendly products, please visit www.majesticproducts.com.

Limited Lifetime Warranty²

The strongest in the industry, Majestic provides a limited lifetime warranty on gas-burning products of the most important aspects: firebox and heat exchanger.



Your Majestic Dealer:

² For full warranty details go to majesticproducts.com. The information provided in this literature is for planning purposes only and subject to change. Please consult the installation manual for actual installation. Actual product appearance may differ from product images. Fireplace, stove and insert surfaces get extremely HOT and can cause severe burns if touched. Keep a safe distance away. To learn more visit www.majesticproducts.com.