

PRODUCT FEATURES

REFRACTORY BRICK LINER

Your fireplace features a concrete refractory brick liner. As with all concrete liners, this liner may develop slight cracks when exposed to heat. These cracks will not affect the performance of the fireplace.

LOCATING FIREPLACE

PLANNING

Plan where you will install the fireplace. This will save time and money later when you install the fireplace. Before installation, consider the following:

1. Where the fireplace will be located. Allow for wall and ceiling clearances (see Installation Clearances, page 5).
2. Everything needed to complete installation.
3. These models are for outdoor use only.
4. Proper air for combustion and ventilation.

PRODUCT SPECIFICATIONS

36" AND 42" MODELS

Note: If only one dimension is shown, the dimension is the same for both 36" and 42" models.

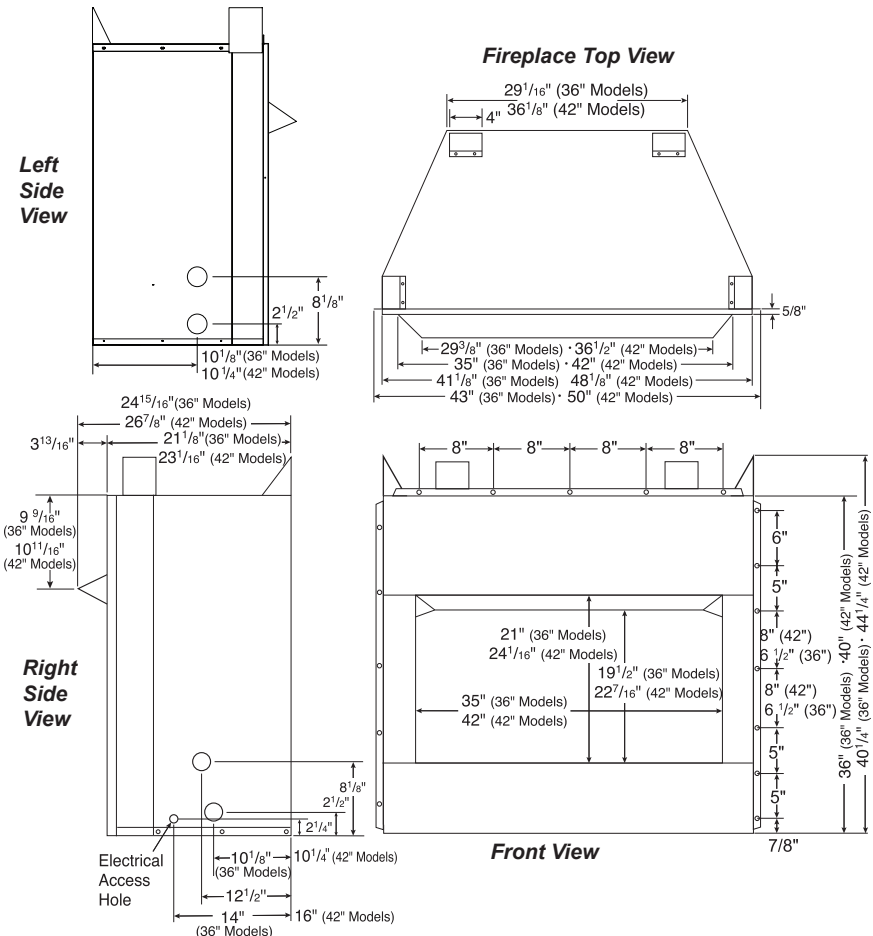


Figure 1 - Fireplace Dimensions (36" and 42" Models)

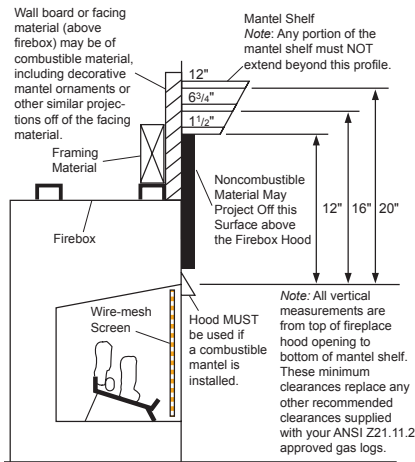


Figure 6 - Minimum Mantel Clearances for Built-In Installation

BUILT-IN FIREPLACE INSTALLATION

1. Frame in rough opening. The fireplace framing should be constructed of 2 x 4 lumber or heavier. Use dimensions in Table 1 and rough opening layout in Figure 4a. Adjust framing so that fireplace is flush with finished wall surface. If installing in a corner, use dimensions in Figures 4b and 4c for rough opening.
2. Install gas piping to fireplace location (see Connecting to Gas Supply, page 8.)
3. Carefully set fireplace in front of rough opening with back of fireplace inside wall opening.
4. Carefully insert fireplace into rough opening.
5. Attach fireplace to wall studs using nails or wood screws through holes in nailing flange (see Figure 5).

IMPORTANT: When finishing your fireplace, combustible materials such as wall board, gypsum board, sheet rock, drywall, plywood, etc. may be butted up next to the sides and top of the fireplace. Combustible materials should never overlap the fireplace front facing.

⚠ WARNING: Use only non-combustible mortar or adhesives when overlapping the front facing with noncombustible facing material.

Table 1

Rough Opening Dimensions for Built-in Installation			
Model	Front Width (Inside to Inside)	Height	Depth (Min.)
36"	41 1/2"	40 1/2"	20 3/4"
42"	48 5/8"	44 1/2"	22 5/8"

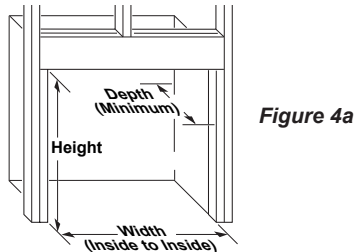


Figure 4a

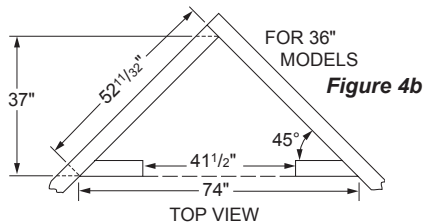


Figure 4b

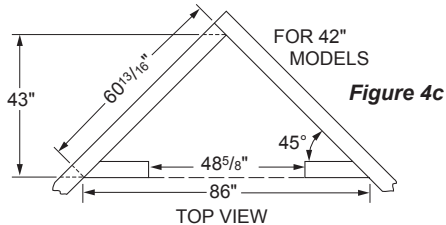


Figure 4c

Figure 4 - Rough Opening for Installing in Wall

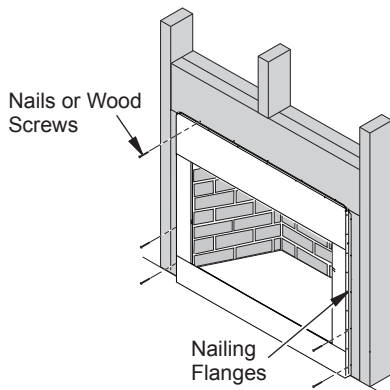


Figure 5 - Attaching Firebox to Wall Studs